

Special Thanks!



LEON LINCOLN



BEN LEVY

MOBILIZING YOUR MOBILE WARRIORS WITH IOS



**GABRIEL
ALEJANDRO IBANEZ**

INTRODUCTION

MOBILIZING YOUR MOBILE WARRIORS WITH IOS

INDEX

- ▶ **INFRASTRUCTURE** - What ought to be in place?
- ▶ **DEVICES** – How does my choice affect what services I can offer
- ▶ **BUSINESS APPS** – Integration to standard and custom workflows
- ▶ **STORAGE** – Cloud storage and local storage
- ▶ **SECURITY** - Protect inside and outside the office
- ▶ **SUPPORT** – How to handle support needs for users in the field
- ▶ **Q&A**

INDEX

- ▶ INFRASTRUCTURE - What ought to be in place?
- ▶ **DEVICES** – How does my choice affect what services I can offer
- ▶ BUSINESS APPS – Integration to standard and custom workflows
- ▶ STORAGE – Cloud storage and local storage
- ▶ SECURITY - Protect inside and outside the office
- ▶ SUPPORT – How to handle support needs for users in the field
- ▶ Q&A

INDEX

- ▶ INFRASTRUCTURE - What ought to be in place?
- ▶ DEVICES – How does my choice affect what services I can offer
- ▶ BUSINESS APPS – Integration to standard and custom workflows
- ▶ STORAGE – Cloud storage and local storage
- ▶ SECURITY - Protect inside and outside the office
- ▶ SUPPORT – How to handle support needs for users in the field
- ▶ Q&A

INDEX

- ▶ INFRASTRUCTURE - What ought to be in place?
- ▶ DEVICES – How does my choice affect what services I can offer
- ▶ BUSINESS APPS – Integration to standard and custom workflows
- ▶ STORAGE – Cloud storage and local storage
- ▶ SECURITY - Protect inside and outside the office
- ▶ SUPPORT – How to handle support needs for users in the field
- ▶ Q&A

INDEX

- ▶ INFRASTRUCTURE - What ought to be in place?
- ▶ DEVICES – How does my choice affect what services I can offer
- ▶ BUSINESS APPS – Integration to standard and custom workflows
- ▶ STORAGE – Cloud storage and local storage
- ▶ SECURITY - Protect inside and outside the office
- ▶ SUPPORT – How to handle support needs for users in the field
- ▶ Q&A

INDEX

- ▶ INFRASTRUCTURE - What ought to be in place?
- ▶ DEVICES – How does my choice affect what services I can offer
- ▶ BUSINESS APPS – Integration to standard and custom workflows
- ▶ STORAGE – Cloud storage and local storage
- ▶ SECURITY - Protect inside and outside the office
- ▶ SUPPORT – How to handle support needs for users in the field
- ▶ Q&A

INDEX

- ▶ INFRASTRUCTURE - What ought to be in place?
- ▶ DEVICES – How does my choice affect what services I can offer
- ▶ BUSINESS APPS – Integration to standard and custom workflows
- ▶ STORAGE – Cloud storage and local storage
- ▶ SECURITY - Protect inside and outside the office
- ▶ SUPPORT – How to handle support needs for users in the field
- ▶ Q&A



MOBILIZING YOUR MOBILE
WARRIOR WITH IOS

Infrastructure

INFRASTRUCTURE: CONSIDERATIONS

- ▶ Active Directory (AD)
- ▶ Virtual Private Network (VPN)
- ▶ Mobile Device Management (MDM)
- ▶ Acceptable Use Policy (AUP)
- ▶ Upgraded WiFi/RADIUS Server
- ▶ Remote Support Tools



MOBILIZING YOUR MOBILE
WARRIOR WITH IOS

Devices

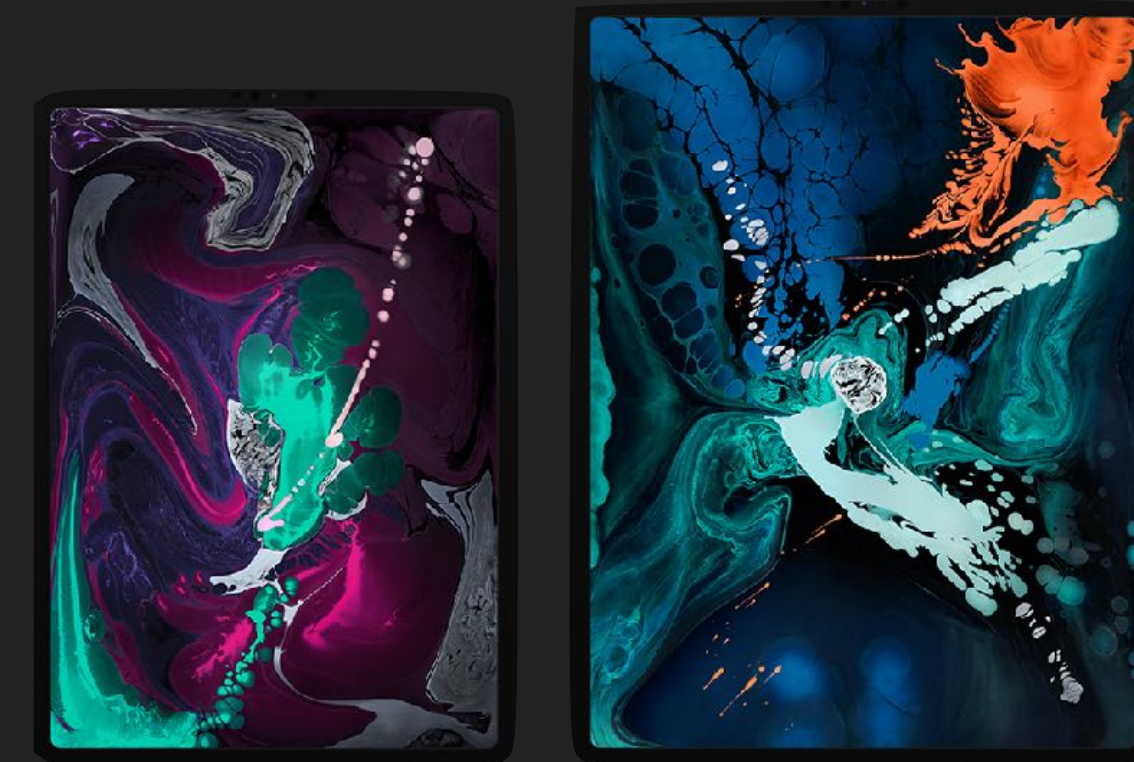
DEVICES — YOUR CHOICE MATTERS

- ▶ iPad Pro Models 10.5 and 12.9
 - ▶ Screen Size: Limited to 12.9"
 - ▶ Keyboard Option: Case or External
 - ▶ [Apple Smart Keyboard](#) Keyboard and Case for iPad, no pencil storage
 - ▶ [Logitech Silm Combo](#) Keyboard, Case and Pencil Storage
 - ▶ Network access: Cellular, WiFi, VPN on Demand
 - ▶ **Lightning only, no USB-C support**
 - ▶ Battery Life: up to 10 + hours depending on model
 - ▶ Processor A10X
 - ▶ Screen: Retina display, Pro Motion Technology and True Tone display, 264 pixel per inch
 - ▶ Storage: 512 G max for current models
 - ▶ Pencil Support



DEVICES — YOUR CHOICE MATTERS

- ▶ Next Generation iPad Pro Models 11 and 12.9
 - ▶ Screen Size: Limited to 12.9"
 - ▶ Keyboard Option: Case or External
 - ▶ [Apple Smart Keyboard Folio](#) Keyboard and Case for iPad
 - ▶ Network access: Cellular, WiFi, VPN on Demand
 - ▶ **USB-C Support, and no Lightning support**
 - ▶ Battery Life: up to 10 + hours depending on model
 - ▶ Processor A12X with 64-bit architecture w/Embedded M12 coprocessor
 - ▶ Screen: Retina display, Pro Motion Technology and True Tone display, 264 pixel per inch
 - ▶ Storage: 1 TB max for current models
 - ▶ Pencil 2 Support



IPAD PRO USERS

- ▶ Desire ultra light weight computing and all day power
- ▶ Need basic business apps to handle day to day needs
- ▶ Access to unique business-critical apps
- ▶ Have wireless infrastructure to leverage in addition to Cellular and VPN
- ▶ Printing needs met with AirPrint
- ▶ Video conferencing solutions (Skype, Zoom, FaceTime, etc.)

DEVICES: MORE THAN JUST IPAD PRO

- ▶ iPad Pro is great tool to use, and our example here...
- ▶ Principles apply to:
 - ▶ macOS
 - ▶ Windows
 - ▶ Android



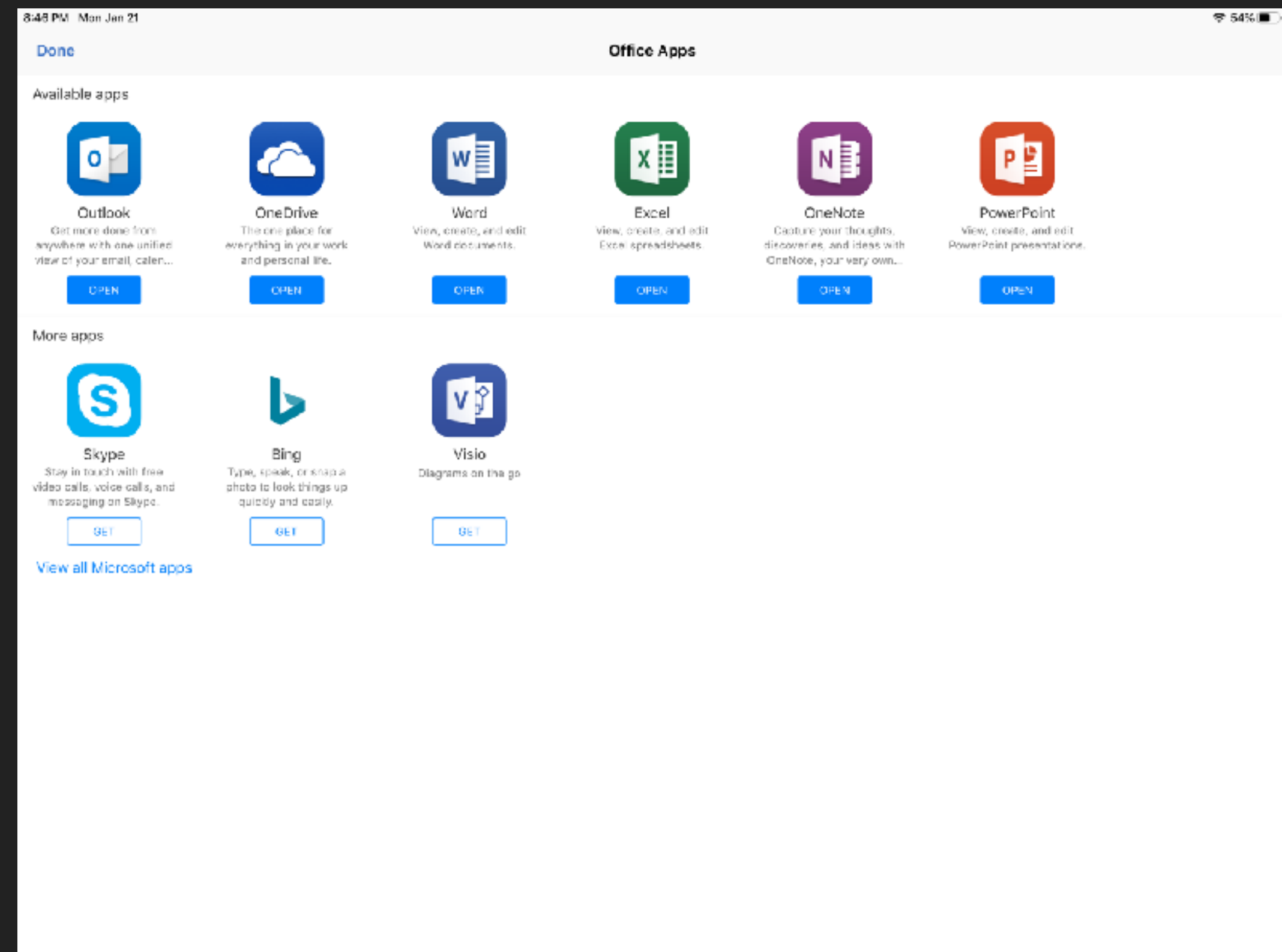
MOBILIZING YOUR MOBILE
WARRIOR WITH IOS

Business Apps

OFFICE 365



- ▶ Standard Corporate Model
- ▶ Outlook
- ▶ Word
- ▶ Excel
- ▶ PowerPoint
- ▶ OneNote
- ▶ OneDrive
- ▶ [Mobile Office 365 Products](#)
- ▶ [Office 365 Productivity](#)



MOBILIZING YOUR MOBILE WARRIOR WITH IOS - BUSINESS APPLICATIONS

OFFICE 365

► Outlook

11:10 AM Tue Jan 22

Edit

Mailboxes

All Inboxes217

iCloud163

Gmail54

VIP ⓘ

Flagged8

Outbox1

ICLOUD ▾

Inbox163

Drafts

Sent

Junk58

Trash

Archive3

Adobe

Create Magazine

Airlines

American

Jet Blue

United

Inbox

Edit

The Cruises for Marriott Loyalty P... 1/8/19

Winter Wanderlust Sale: 3 Days of Deals

Don't miss your chance at pre-paid gratuities, open bar, fares from \$42/night, and more. Pow...

Apple 1/8/19

Your receipt from Apple.

Receipt APPLE ID llincoln3@mac.com BILLED TO Visa 3609 Leon Lincoln, III 7 Lefevre Dri...

The DataCamp Team 1/8/19

1 Day Left to Save 50%

This offer expires soon! Skill up and save big on a personal subscription to DataCamp. 1 Day Le...

Crate and Barrel 1/8/19

Introducing: The Beatles x Crate and Barrel.

From Abbey Road to your home.

...

The Home Depot Style & Decor 1/8/19

COZY UP with these chic linens.

Save on bedding, towels and more today.

Save on bedding, towels and more today. View...

Apple World Today Deals 1/8/19

Launch a Creative Career with This Graphic De...

Save up to 90% on the hottest finds from around the web: stylish accessories, gadgets, everyda...

Overstock.com 1/8/19

Shop Now! Winter Blowout! Bring On the Deals!

Get FREE SHIPPING, even on the BIG stuff when you sign up for Club O. Plus, earn 5% rewards...

iHeartRadio 1/8/19

By the beard of Zeus, the Podcast Awards are...

Here's your chance to attend.

...

Great Rock Church 1/7/19

Prayer Sheet

Updated on 1/11/19 - 1 Unsent Message

Account Errors [Details...](#)

100%

Details

TT

The DataCamp Team

To: Leon H Lincoln III

1 Day Left to Save 50%

January 8, 2019 at 10:58 AM

DataCamp

NEW YEAR'S SALE

1 Day Left to Save 50%

Mission possible. Commit to learning data science and analytics this year.

THIS OFFER EXPIRES IN

00

00

00

00

Days

Hours

Minutes

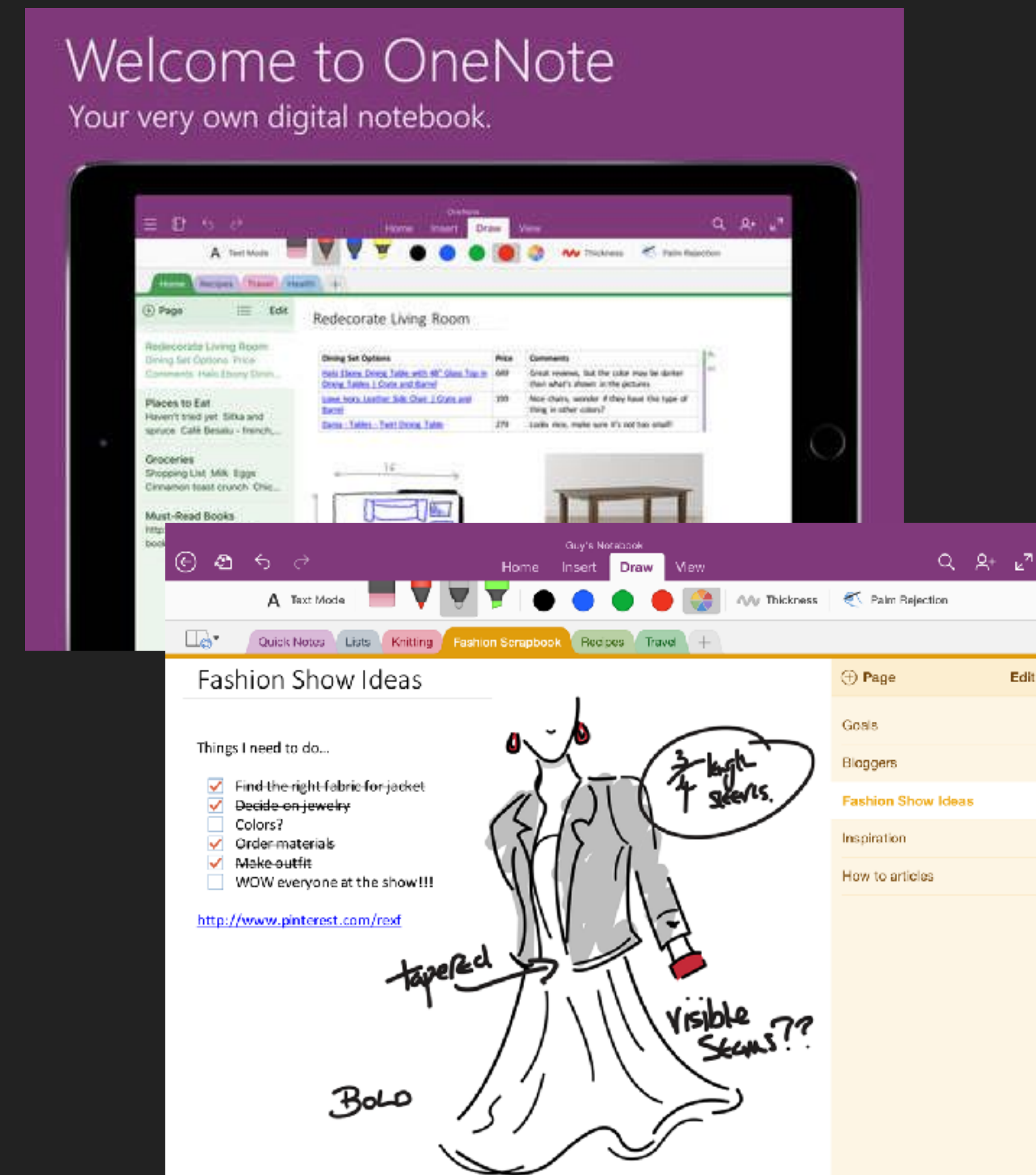
Seconds

Save Now!

Learn to make better decisions with data and get ahead in your career.

OFFICE 365

- ▶ OneNote
 - ▶ Handwriting to text convertor
 - ▶ Projects can be separate NoteBooks integrated into app
 - ▶ Each notebook can have chapters (sections) and those can have multiple pages
 - ▶ You can store documents such as PDF's or Microsoft Documents (Word, Excel, PowerPoint) inside pages
 - ▶ Integrated to do lists



G SUITE

- ▶ Modern Web Standard/Corporate Model
- ▶ GMail
- ▶ Docs
- ▶ Sheets
- ▶ Slides
- ▶ G Drive

G Suite

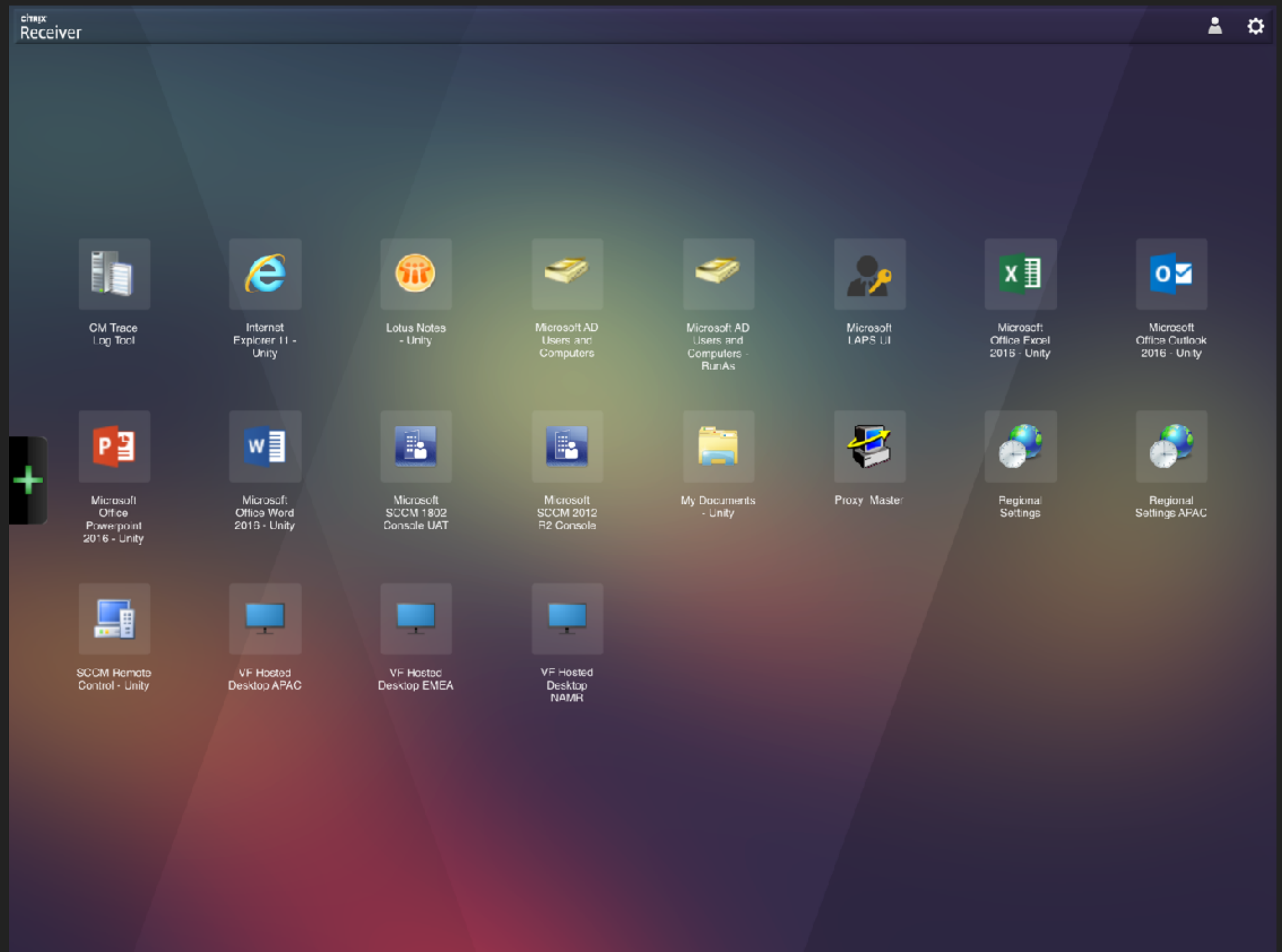
SPECIALITY SOFTWARE

- ▶ Citrix
- ▶ VMware Horizon
- ▶ Terminal access



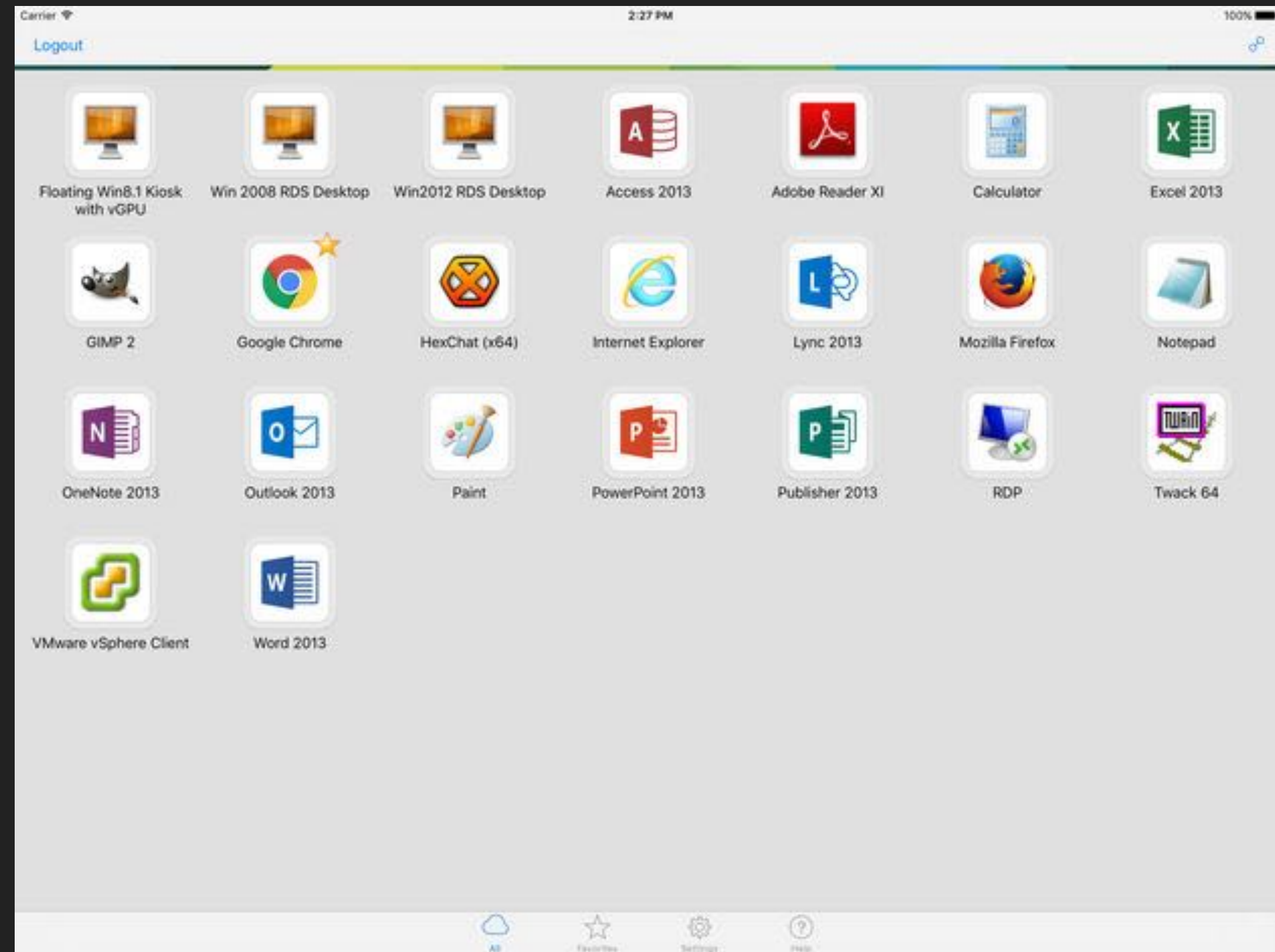
CITRIX WORKSPACE

- ▶ Access to Windows apps that may not exist as iOS apps
- ▶ Pricing varies. Speak to Citrix representative.
- ▶ Using XenDesktop/XenApp (third party solution) to host Citrix VDI interfaces



VMWARE WORKSPACEONE

- ▶ Access to Windows apps that may not exist as iOS apps
- ▶ VM Virtual Machines client
- ▶ [App Store Link](#)



VMWARE: COST?

- ▶ **Standard:** Secure Access and Device Management
- ▶ **Advanced:** Unified Endpoint Management and Secure Mobile Apps
- ▶ **Enterprise:** Intelligence-driven Secure Digital Workspace with Horizon Apps (virtual applications to devices)
- ▶ **Enterprise for VDI:** Intelligence-driven Secure Digital Workspace with Horizon Cloud (virtual applications and desktops to devices)

| Standard | Advanced | Enterprise | Enterprise for VDI |
|--------------------------------------|------------------------------------|----------------------------------|----------------------------------|
| \$3.78 per device \$6.52 per user | \$6 per device \$10.90 per user | \$10 per device \$15 per user | \$20 per device \$25 per user |

MOBILIZING YOUR MOBILE WARRIOR WITH IOS - BUSINESS APPLICATIONS

TERMINAL

- ▶ Terminus
- ▶ SSH
- ▶ Telenet
- ▶ Mosh shell
- ▶ [App Store Link](#)



TERMINUS: COST?

- ▶ **Free:** Use on one device, SSH, Telnet & Mosh, Port Forwarding
- ▶ **Premium:** SSH, Telnet & Mosh, Port Forwarding, Secure Sync between devices, SFTP, Terminal Tabs, Password Paste, Autocomplete, Agent Forwarding, Snippets, Run Snippets on multiple targets, Port Knocking

| Free | Premium |
|------------------|------------------|
| Free | \$6.99 per month |
| One device only. | \$59.88 per year |



MOBILIZING YOUR MOBILE
WARRIOR WITH IOS

Storage

WHERE

- ▶ Understanding the new model
 - ▶ Cloud Storage vs Traditional Network Storage
 - ▶ Application specific storage
 - ▶ Local on the device
 - ▶ Backups for local storage

CLOUD STORAGE

- ▶ Microsoft OneDrive
- ▶ Google G Drive
- ▶ Dropbox
- ▶ Apple iCloud

OFFICE 365

- ▶ OneDrive and local storage
- ▶ Sync client limited to one specific folder on macOS and iOS
- ▶ Sharepoint OneDrive



G SUITE

- ▶ G Drive and local storage
- ▶ Team Drive vs Individual G Drive
- ▶ 750 GB cap upload of data per day for Team Drive
- ▶ Max File upload size 5 TB
- ▶ Daily quota upload limit exceeded will force additional files to wait until next day

G Suite



DROPBOX

- ▶ Max file size (no limit, while using the desktop or mobile app)
- ▶ Files uploaded to dropbox.com must be 50 GB or smaller.
- ▶ Note: Files uploaded through the API must be 350GB or smaller.
- ▶ [App integration](#)
- ▶ [Comparison](#)



APPLE ICLOUD

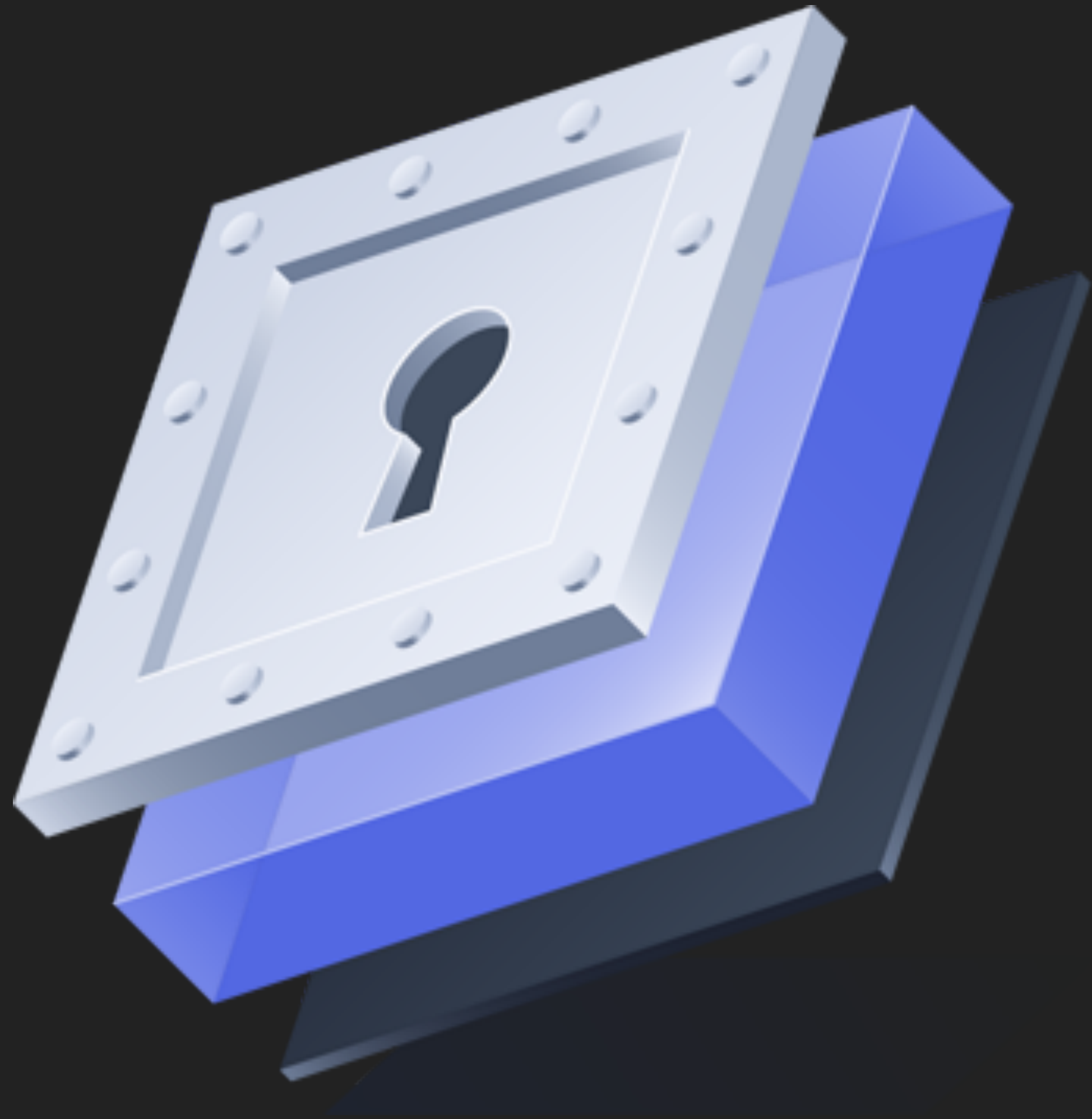
- ▶ Max file size 50 GB
- ▶ Syncs files from home directory including macOS desktop
- ▶ App integration
- ▶ [Apple iCloud Info](#)

APPLICATION SPECIFIC STORAGE

- ▶ Apps that store their data inside themselves

LOCAL STORAGE

- ▶ Files application
- ▶ Backups



MOBILIZING YOUR MOBILE
WARRIOR WITH IOS

Security

PROTECT

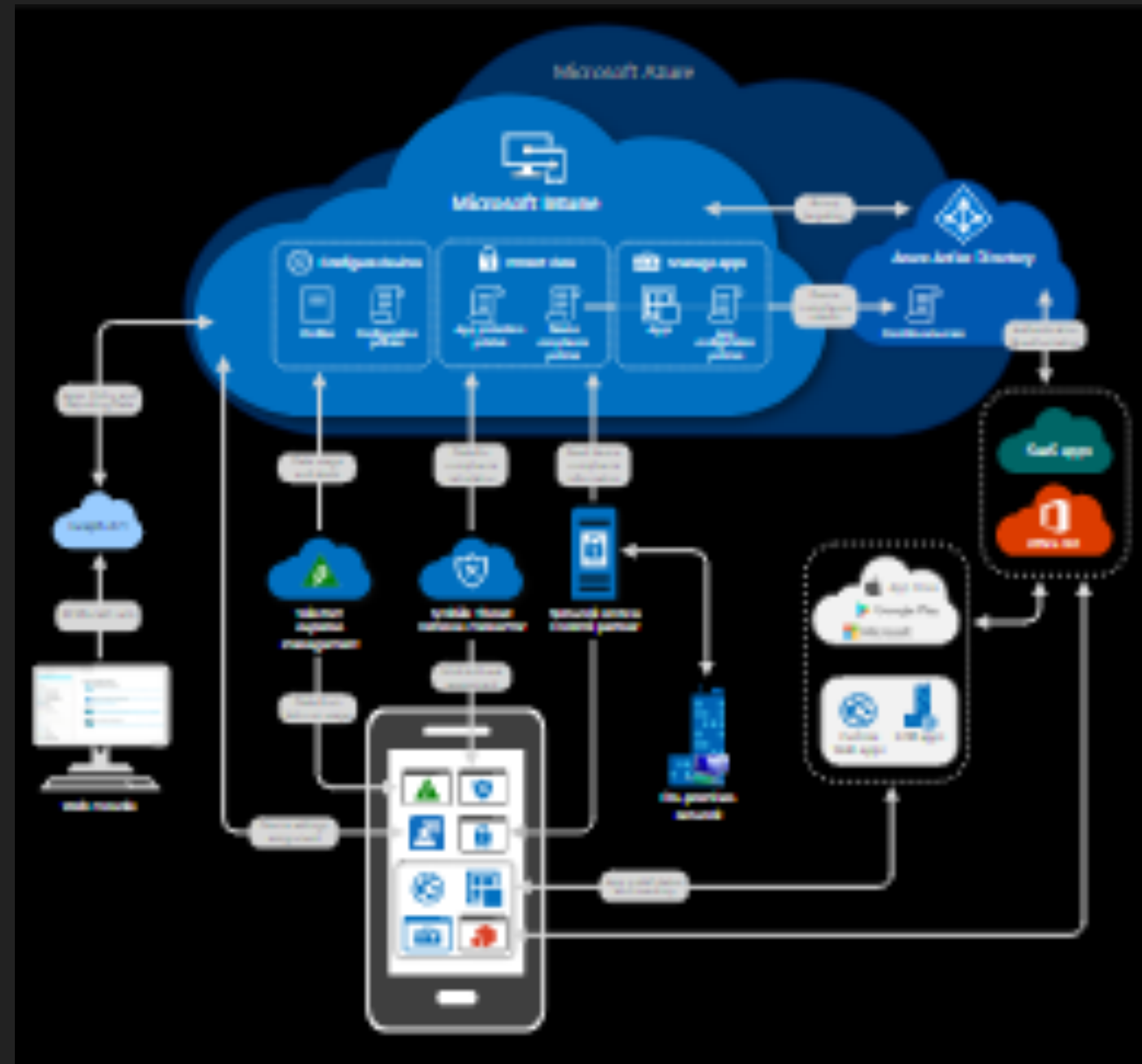
- ▶ Understanding the new model
 - ▶ Data in cloud or on local device and the Files App
 - ▶ Protecting Intellectual property
 - ▶ Device security
 - ▶ Face ID or Touch ID and Passcode
 - ▶ MDM

STORAGE PROTECTION

- ▶ Two-Factor protection
- ▶ Encryption (on transmit also)
- ▶ Regulatory compliance (HIPAA, Sarbanes-Oxley)
- ▶ Can data be copied to non-corporate users
 - ▶ How sensitive is data

STORAGE PROTECTION

► Microsoft InTune



DEVICE SECURITY

- ▶ Face ID or Touch ID and Passcode
- ▶ MDM



MOBILIZING YOUR MOBILE
WARRIOR WITH IOS

Support

HELP

- ▶ Understanding the new model
 - ▶ Remote assistance
 - ▶ Apps from corporate store
 - ▶ Passcode lock
 - ▶ Device Wipe and can user rebuild

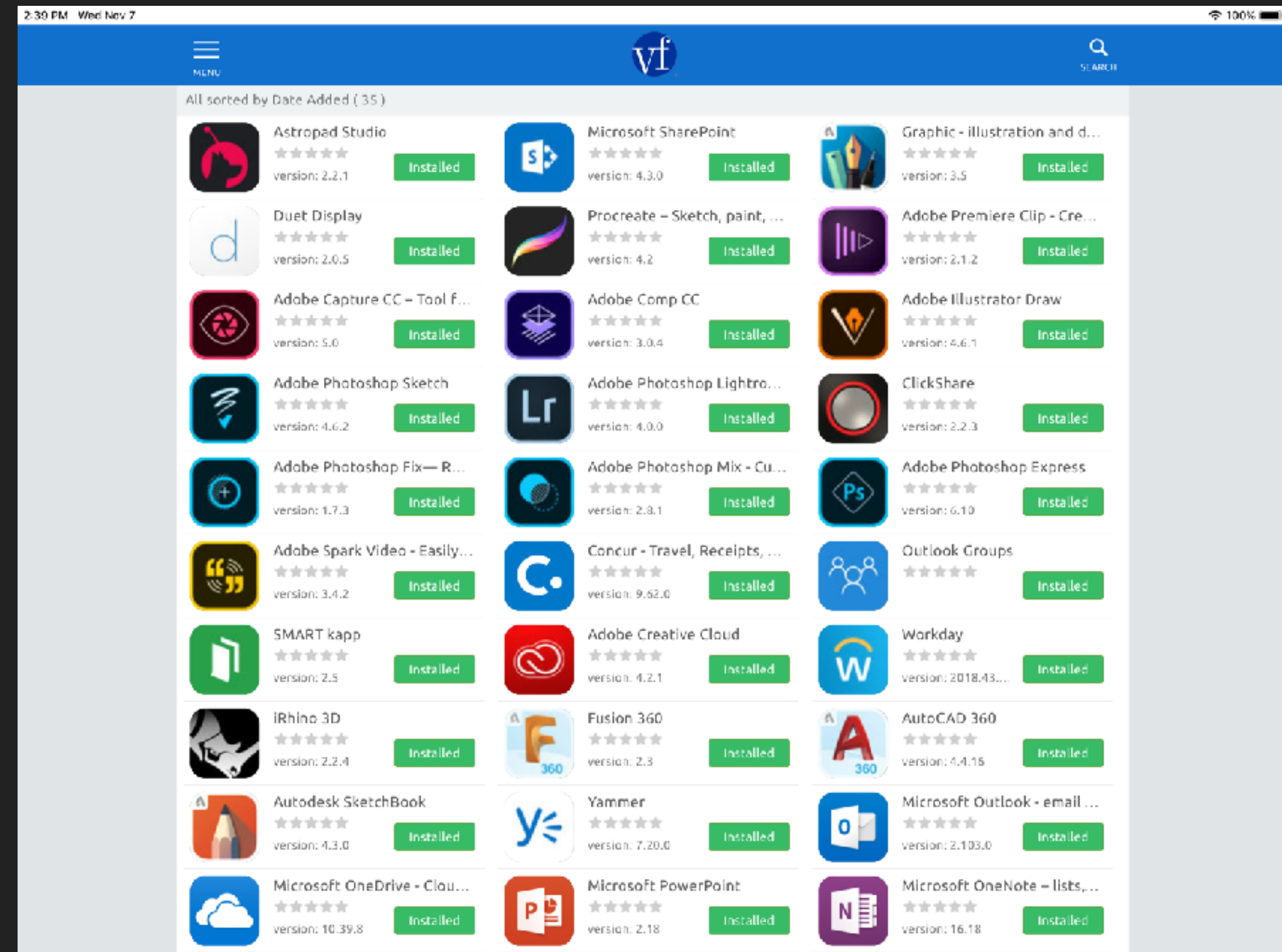
REMOTE ASSISTANCE

- ▶ [Bomgar](#)
- ▶ [LogMeIn](#)
- ▶ [Splashtop Remote Support](#)
- ▶ Apple
 - ▶ Quicktime Player

MOBILIZING YOUR MOBILE WARRIOR WITH IOS - SUPPORT

APPS

- ▶ Apple iTunes Store
- ▶ MDM App Store



PASSCODE

- ▶ Forgotten passcode
- ▶ Passcode complexity restrictions
- ▶ Default security behaviors to suit an AUP

DEVICE WIPE

- ▶ Theft, loss, potential data exposure or simple troubleshooting? Device wipe may be the answer
 - ▶ Plan for the need and know how to do it
 - ▶ Make it user friendly
 - ▶ Ensure users can recover their data to a replacement device without IT



MOBILIZING YOUR MOBILE
WARRIOR WITH IOS

Q&A

IBANEZ.G@ICLOUD.COM – GABRIEL IBANEZ